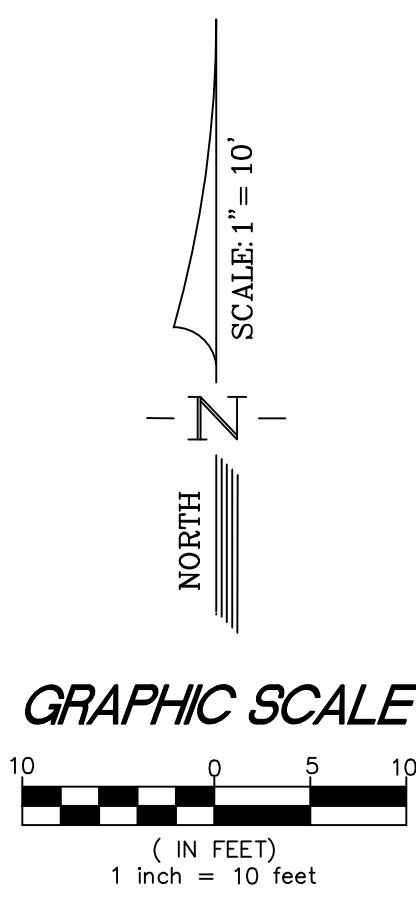
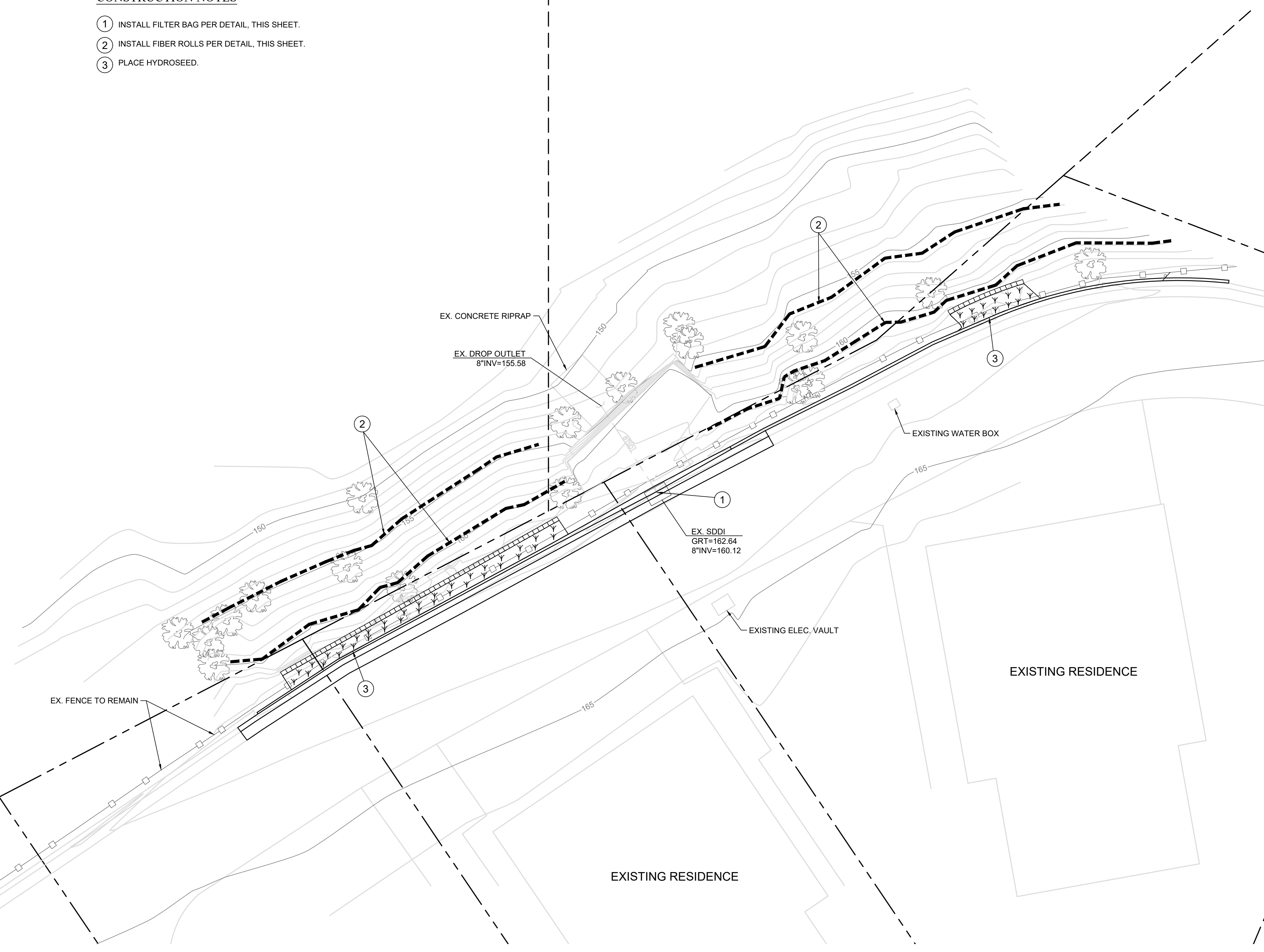
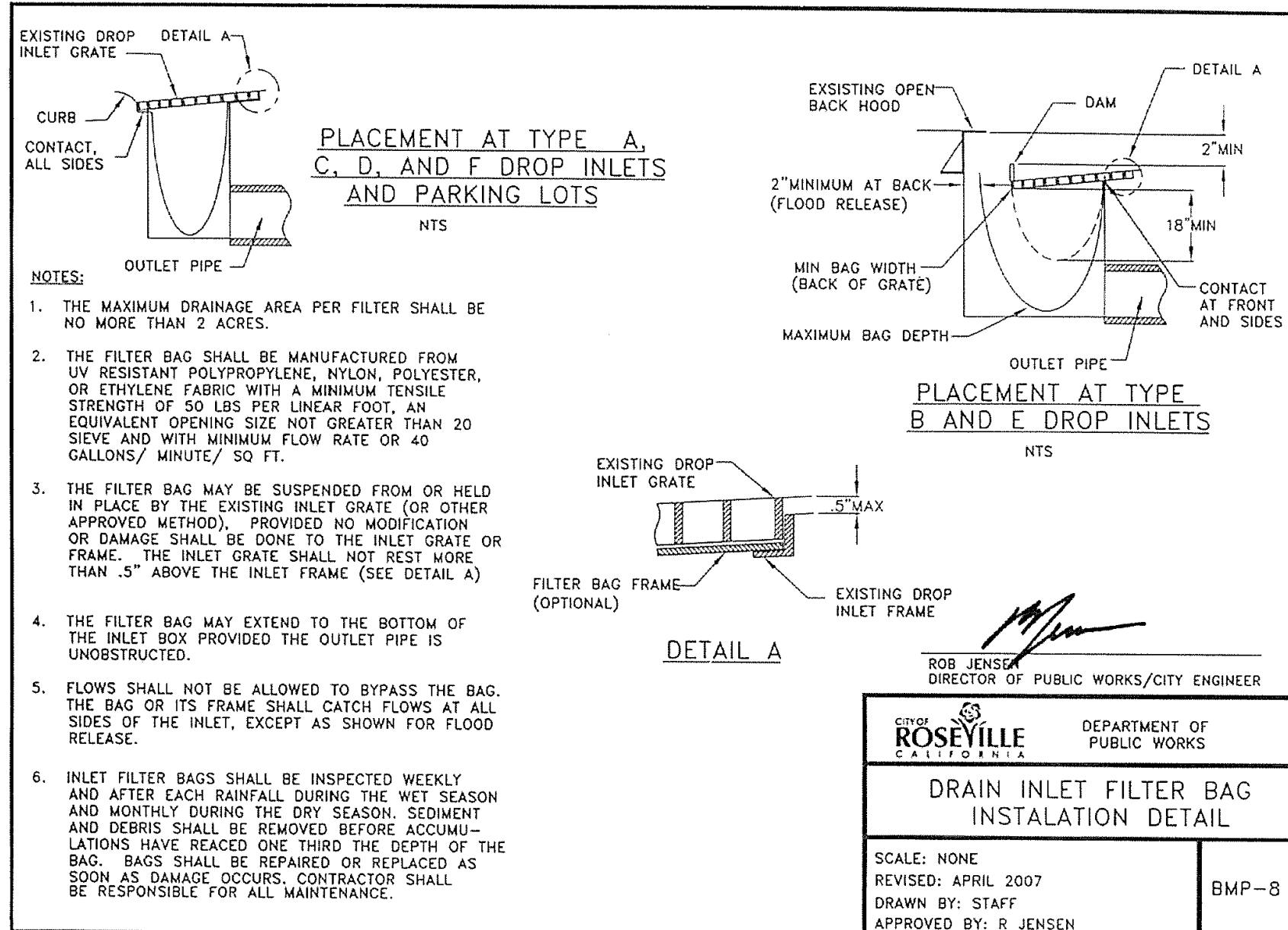


CONSTRUCTION NOTES

- 1 INSTALL FILTER BAG PER DETAIL, THIS SHEET.
- 2 INSTALL FIBER ROLLS PER DETAIL, THIS SHEET.
- 3 PLACE HYDROSEED.



No.	Description	Engr Init	COUNTY APPROVAL	
			By	Date

BENCHMARK DESCRIPTION	
CITY BENCHMARK 80: ELEV. = 162.58	
3" BRASS DISC STAMPED "2018 PLS 8278" ON DRY CREEK AT HARDING BLVD. NORTHEAST CORNER OF BRIDGE AT BACK OF SIDEWALK.	

DESIGNED	R. HUCK
DRAWN	R. HUCK
CHECKED	D. DOSEN
DATE	3/8/19
SCALE	1" = 10'

PRELIMINARY DRAWING
FOR PLAN CHECK SUBMITTAL ONLY
NOT FOR CONSTRUCTION



SGI COMPANIES
SGI CIVIL • SGI 3D • SURVEYORS GROUP, INC.
9001 Foothills Blvd., Suite 170
Roseville, CA 95747
(916) 789-0822 (916) 789-0824 (Fax)
www.sgicompanies.com

ROSEVILLE GREENS HOMEOWNER'S ASSOCIATION
IMPROVEMENT PLANS
265 SHARP CIRCLE
ROSEVILLE, CALIFORNIA
EROSION CONTROL PLAN

SHEET NO.
C-5 OF 5
JOB NO. BST 18-89